

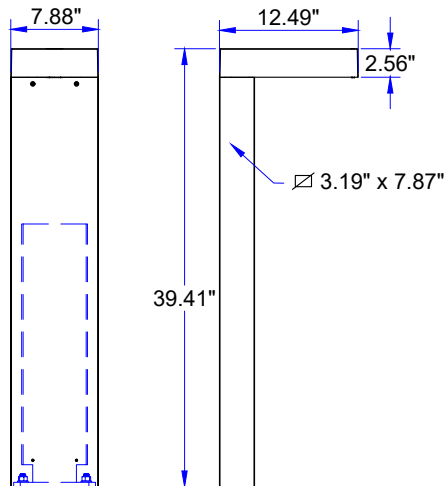
INSTALLATION AND SERVICE MANUAL

LIGMAN
LIGHTING USA

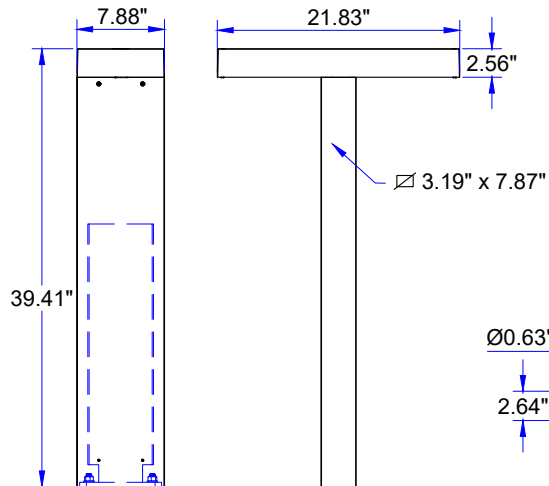
For installation of Light Linear PT Single Head and Double Head Bollard For Vandal Resistant Bollard Insert
Model. ULI-10021-VBRI, ULI-10022-VBRI , ULI-10031-VBRI, ULI-10032-VBRI

Product drawing (dimensions)

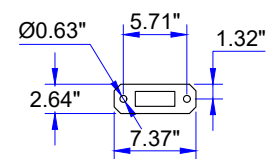
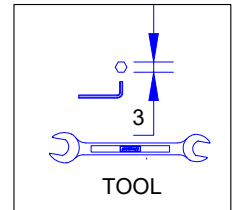
SUITABLE FOR WET LOCATIONS



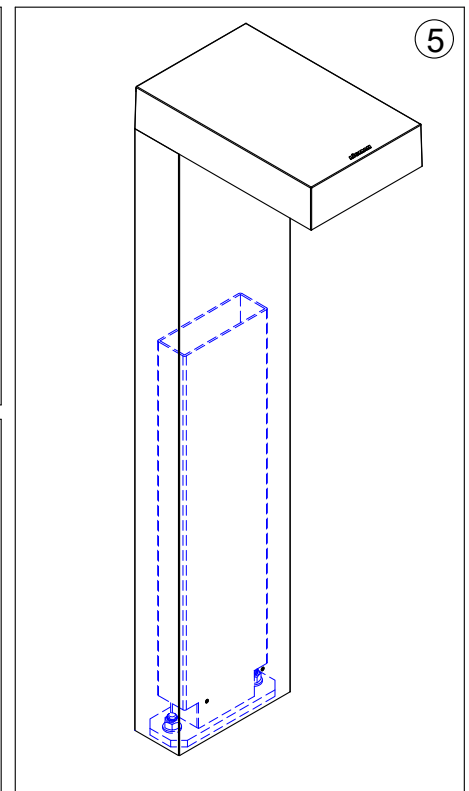
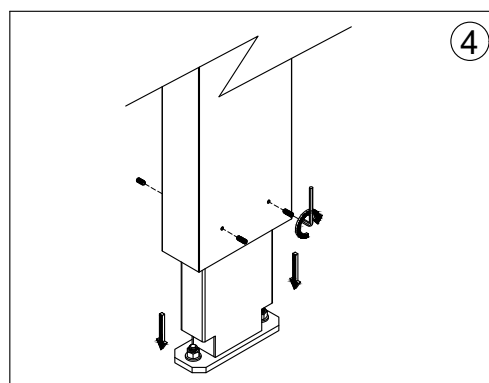
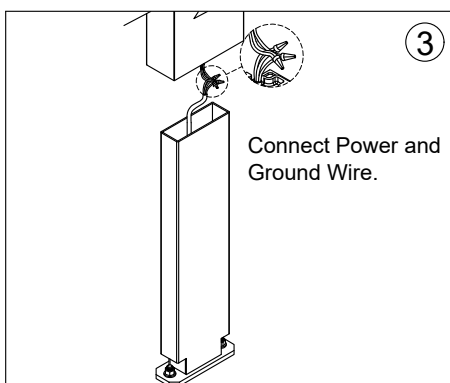
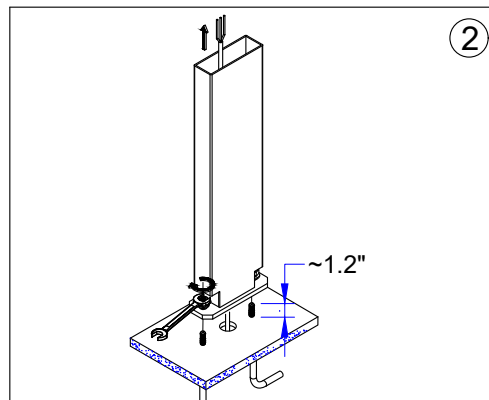
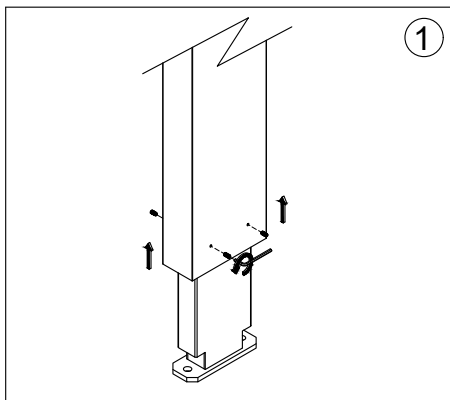
ULI-10021-VBRI & ULI-10022-VBRI



ULI-10031-VBRI & ULI-10032-VBRI



MOUNTING DETAIL



Notice to installer :

1.WIRING INSTRUCTIONS Warning : RISK OF FIRE AND ELECTRICAL SHOCK. : FIXTURE MUST BE INSTALLED BY A QUALIFIED ELECTRICIAN ONLY>FIXTURE IS INTENDED FOR INSTALLATION IN ACCORDANCE WITH THE NATIONAL ELECTRICAL CODE, LOCAL AND FEDERAL CODE SPECIFICATIONS. DISCONNECT POWER BEFORE SERVICING.

2.This fixture has a VOLTAGE SPECIFIC BALLAST,Check that the supply voltage is the same as the installed ballast voltage.

Ligman Lighting USA

7144 NE Progress Court, Hillsboro
Oregon, 97124, USA
Tel : 503 645 0500 | Fax : 503 645 8100

www.ligmanlightingusa.com

ULI-10021-VBRI 20/03/24/REV.0
1/1

FM-TS-13-1/13-05-2563/Rev.6